

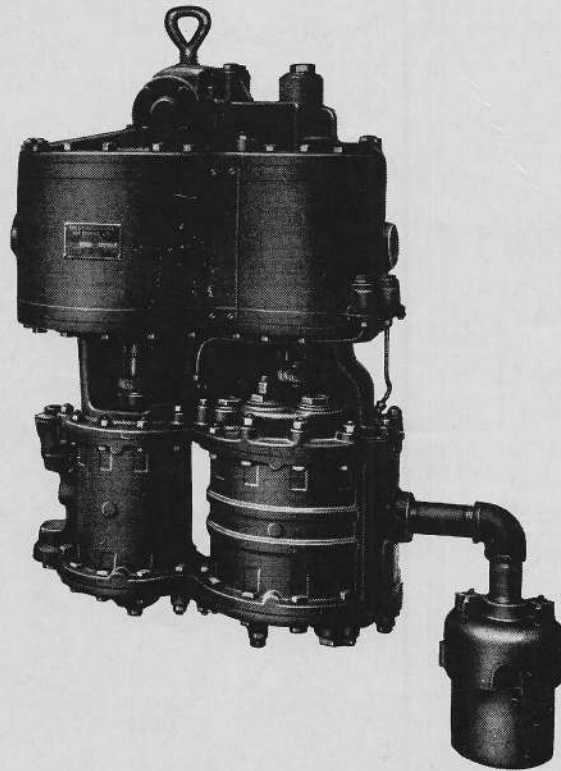
BACKSHOP ENTERPRISES

Bernie Watts

303·424·6882

5160-A PARFET ST., UNIT 2 • WHEAT RIDGE, CO 80033

10¹/₂" CROSS COMPOUND AIR COMPRESSOR



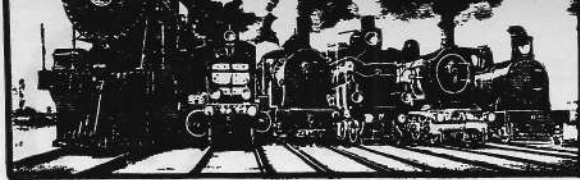
REPAIR PARTS LIST

IDR 9403-1

DECEMBER

1950

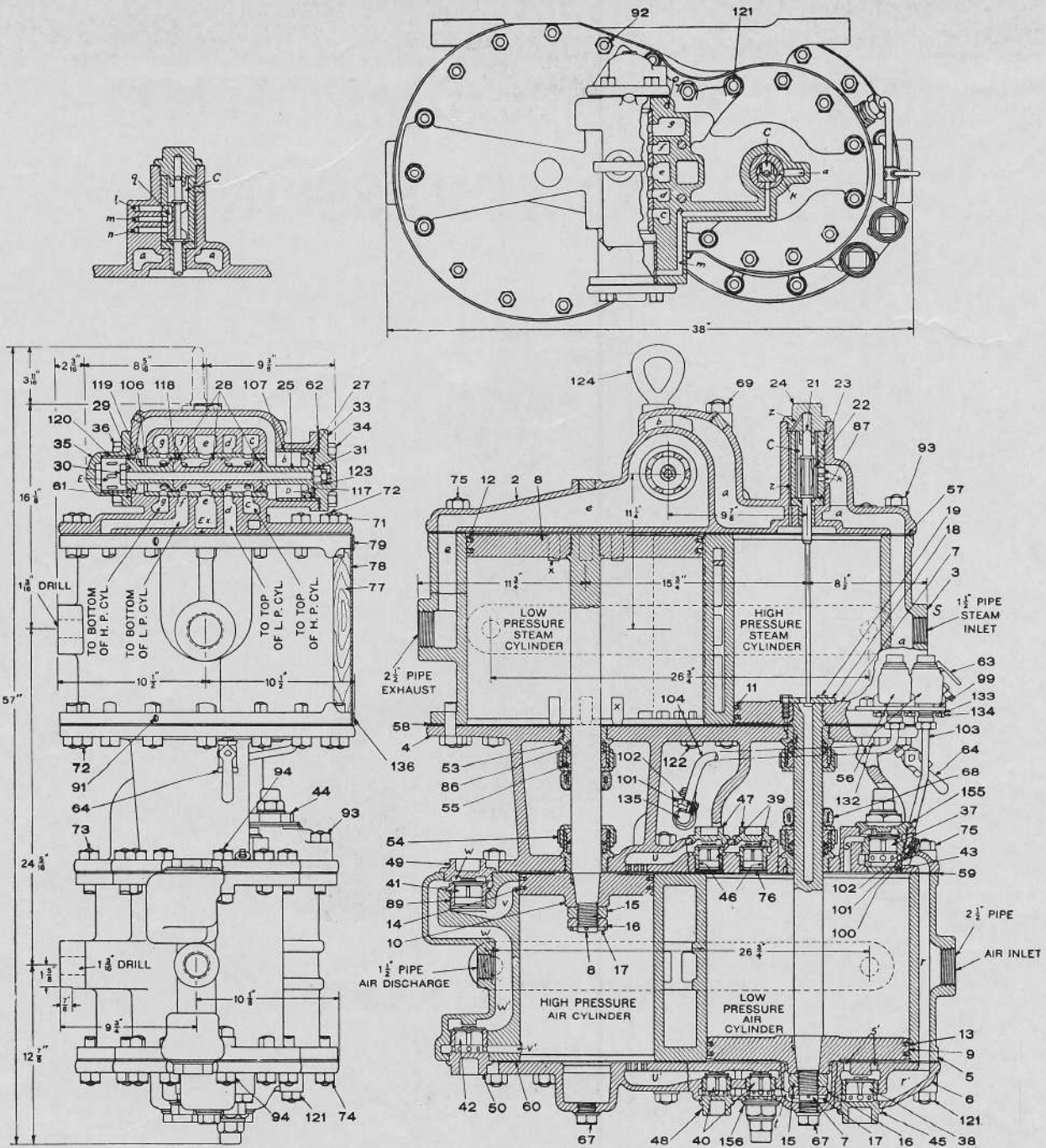
(SUPERSEDING ISSUE OF JULY, 1948)



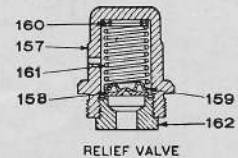
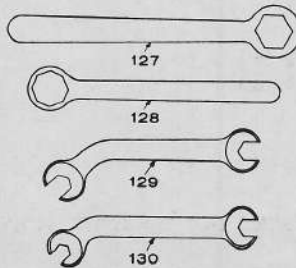
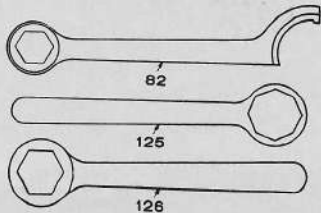
303·424·6882

5160-A PARFET ST., UNIT 2 • WHEAT RIDGE, CO 80033

10 1/2" CROSS COMPOUND AIR COMPRESSOR



LIFT OF AIR INLET AND AIR DISCHARGE VALVES 5/8" AND INTERMEDIATE VALVES 1/2"





Bernie Watts

303-424-6882

5160-A PARFET ST., UNIT 2 • WHEAT RIDGE, CO 80033

Piece No. 510670 10½" Cross Compound Air Compressor, complete.

Pc. No.	Ref. No.	Pc. No.	Ref. No.
72358	1	25078	73
		25078	74
		12150	75
		17990	76
72357	2	79206	77
79544	3	79201	78
510672	4	35087	79
		37400	82
71955	5	18285	86
		31329	87
510673	6	8269	89
		68421	91
98269	7	12148	92
		22669	93
		12148	94
98274	8	78067	99
		71756	
98285	9	71755	100
98280	10	78071	
97720	11	78069	
97893	12		
97478	13	71757	
97700	14		
1590	15	71748	101
1591	16	71727	102
1589	17	78070	103
30816	18	78068	104
12065	19	50890	106
20103	21	50888	107
1706	22	504618	
50889	23	35324	117
13302	24	504613	
504623	25	35326	118
		504608	
502001	27	35325	119
501982	28	54693	120
501967	29	25084	121
89234	30	25080	122
87090	31	2503	123
35334	33	71080	124
1759	34	2485	125
		2483	126
39669	35	1937	127
1759	36	1936	128
29177	37	2481	129
29177	38	1938	130
24396	39	12155	132
24396	40	17173	133
29177	41	24286	134
29177	42	71754	135
77117	43	79203	136
83125	44	510601	
44445	45	510602	155
8430	46	510451	
83124	47	508976	
46806	48	509637	156
83125	49	509564	157
44445	50	509635	158
7736	53	509636	159
53863	54	18723	160
7737	55	99157	161
78072		509634	162
		*527739	
*89042	56	3526	
		33711	
35041	57	18023	
35041	58	33310	
35042	59		
35042	60		
20561	61		
31186	62		
1887	63		
99080	64		
1919	67		
17582	68		
67610	69		
3661	71		
25078	72		

*Note—For details of Type "B-3" Automatic Air Cylinder Oil Cup and G-2 Filter, See Page 4.

Prices will be quoted upon application

Orders should give PIECE NUMBER and NAME of part wanted



Crown Metal Products Co.

WYANO,

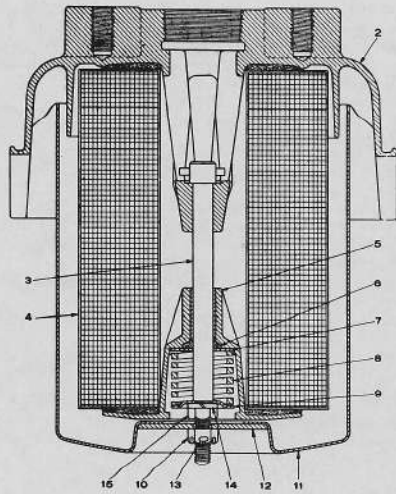
PENNSYLVANIA,

15695

10½" CROSS COMPOUND AIR COMPRESSOR

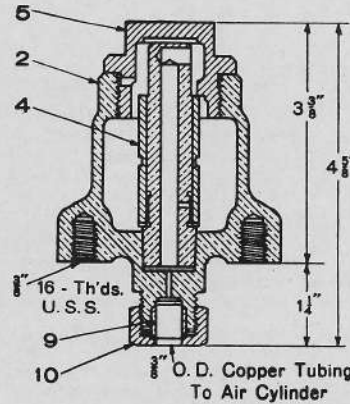
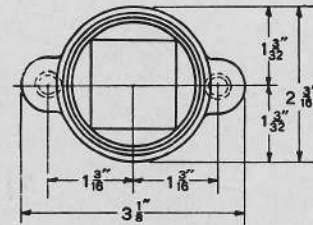
G-2 AIR FILTER

Pc. No. 527739 G-2 Air Filter, Complete



Approx. Net Weight 40 lbs.

Pc. No.	Ref. No.	Description
526604		Cover, Complete (includes 2 and 3)
525646	2	Cover
513099	3	Tie Bolt with Pin
510868	4	Filter Unit
511950	5	Spring Cage
510865	6	Packing Ring
511930	7	Packing Ring Retainer
500944	8	Spring
511932	9	Spring Retainer
512581	10	Castellated Nut for Casing
506252	11	Casing
511953	12	Plate
506257	13	Cotter
15951	14	Lock Washer
502365	15	Filter Unit Nut
66679		3"x2½" Bushing



Net Weight 23½ lbs.

TYPE "B-3" AUTOMATIC AIR CYLINDER OIL CUP

Piece No. 89042 Type "B-3" Automatic Air Cylinder Oil Cup, complete less Brackets and Oil Tubes

Pc. No.	Ref. No.	Description
89043	2	Body with Valve Bushing
70883	4	Sleeve
88418	5	Cap Nut
71727	9	Sleeve for 3/8" O.D. Copper Tubing
71748	10	Union Nut

COMPRESSOR DATA

The 10½" Compressor, which is of the compound type having cylinder dimensions and stroke as shown below has a displacement of 150 cubic feet of free air when operating at the rate of 131 single strokes per minute.

Net Weight 1800 lbs.

Shipping Weight 2150 lbs.

	DIAMETER		DIAMETER
High Pressure Steam Cylinder.....	10½"	Low Pressure Steam Cylinder.....	16¾"
High Pressure Air Cylinder.....	9½"	Low Pressure Air Cylinder.....	14½"
Length of Stroke 12"			

	DIAMETER		DIAMETER
Steam Admission Pipe.....	1½"	Steam Exhaust Pipe.....	2½"
Air Admission Pipe.....	2½"	Air Delivery Pipe.....	1½"

Size of Governor required, 1½"
 Designed for Steam Pressure of 100 lbs.
 Working against Air Pressure of 80 lbs.

APPROXIMATE OVER-ALL DIMENSIONS

HEIGHT	WIDTH	DEPTH
55 3/8"	38"	21"

Prices will be quoted upon application

Orders should give PIECE NUMBER and NAME of part wanted